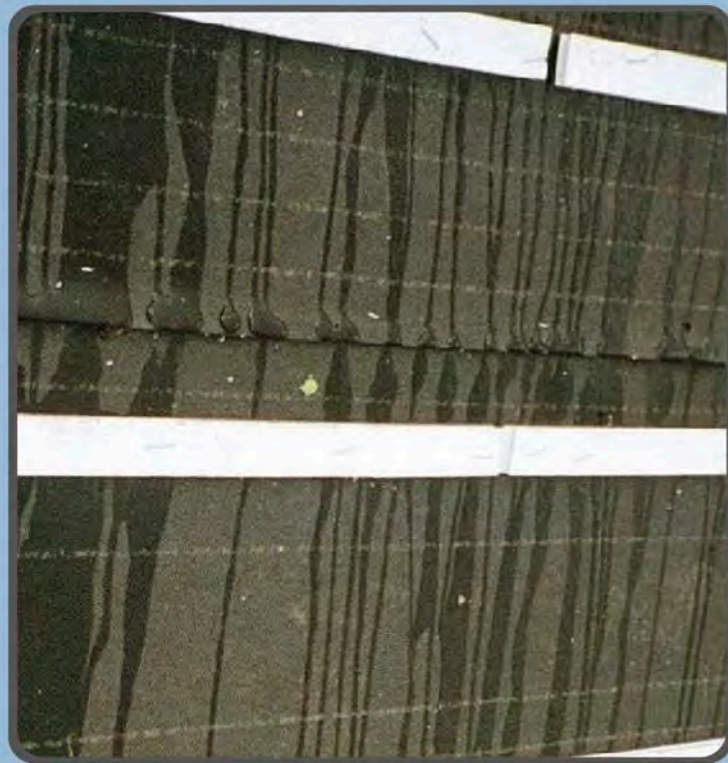


The plastic corrugation of the Batten Plus roof battens allows air to continually flow between the deck and tiles. Meanwhile, moisture is also allowed to drain beneath the tiles, eliminating backup and ponding of moisture on the deck and behind the battens.



SUPERIOR PERFORMANCE

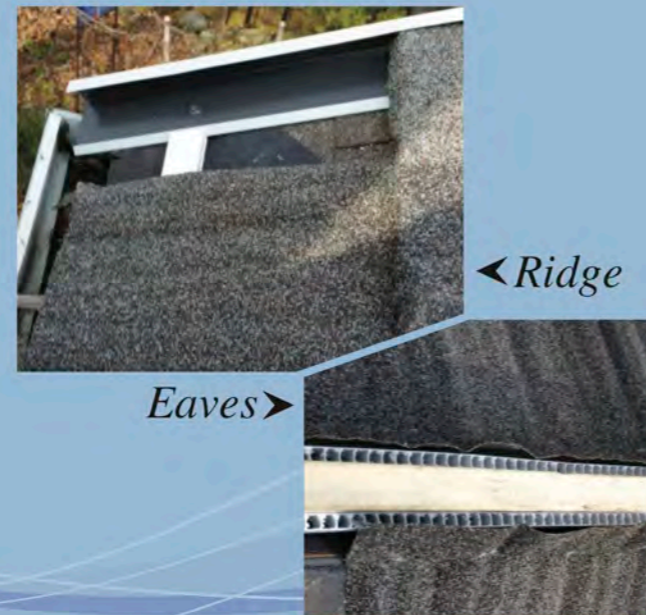
Battens Plus Roof Battens unique design offers many features that provide long term superior performance for tile roof applications.

- Durable corrugated plastic allows water to drain under the tiles
- Open batten design provides ventilation by allowing air to move between the tiles and decks
- Plastic design bonds batten to the felt which eliminates leaking around fasteners
- Reduces premature reroofing caused by water damage and poor air circulation

EXCELLENT FOR APPLICATIONS UNDER TILE ROOFS



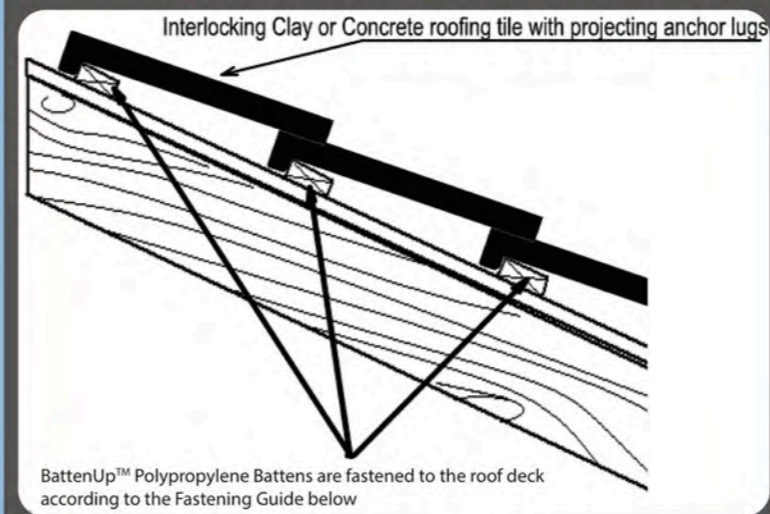
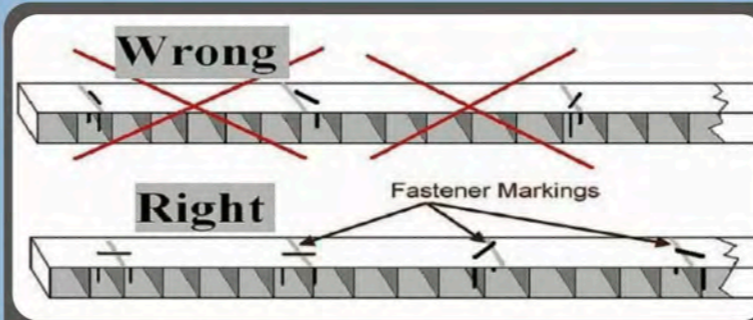
FOR VENTING THE EAVES AND RIDGE UNDER STONE COATED STEEL



For venting the ridge and eaves

SPECIFICATIONS

Testing performed at Ramtech Laboratories Paramount, CA



- 1/2" x 1 5/8" x 4' in length
- 48 pieces per bundle
- 49 bundles on a pallet
- 2 square bundles
- Weighs only 14lbs

www.battensplus.com

Contact:

Battens Plus

(530) 620-5287

support@battensplus.com

BATTENS PLUS, INC.

BattenUp™ Roof Battens



Battens Plus polypropylene, flow through roof battens are a state-of-the-art alternative to currently used wood battens, enhancing quality and longevity of the roof system.



WEATHER RESISTANT



EASY INSTALLATION



ENERGY EFFICIENT



SAVE TIME & MONEY



GREEN



LIGHTWEIGHT

BATTENS PLUS ROOF BATTENS

- Lightweight, easy to use battens
- Made out of durable polypropylene

- 1/2" x 1 5/8" x 4' in length
- 2 square bundles weigh only 14 lbs
- 48 pieces per bundle
- 49 bundles on a pallet



INSTALLATION ADVANTAGES

Battens Plus roof battens are engineered to make installation easy

- Easily installed with a staple gun
- Unlike warped or knotty wood battens, each BattenUp™ batten is consistent in quality
- Economic, durable, and an efficient way to take your customer to the next level of quality!
- Quick install. Cuts easily with a utility knife or scissors for a perfect fit
- Lightweight at only 14 lbs per bundle
- Weather Resistant. Made from 100% polypropylene for strength, stability, and light weight. BattenUp™ battens are not susceptible to rotting, termites, or other infestations.

TITLE 24 COMPLIANT

In accordance with the California Energy Commissions updated Title 24 Building Energy Efficiency Standards, "BattenUp™" plastic roof battens can be used as an alternative to installing a "cool roof,"

Section 150.2(b) 1 Hi states an air space of 1" is to be provided between the top of the roof deck and the bottom of the roofing product.

! California Building Code recognizes BattensPlus roof battens as a cool roof option meeting the minimum of 1" airspace between the tile and roof deck.



As part of Battens Plus roof system, ventilation under the tiles keep the building cooler in hot climates, increasing the life of the roof and decreasing energy costs.



100% polypropylene
Recyclable



LEAK PROBLEMS MOLD & MILDEW CONCERNS



Exposed Sheathing

The effects of improper drainage and ventilation can be seen on the left. The felt underlayment is the last line of defense. Even double felting fails when water can not escape and there is a lack of air circulation.

Ventilation

Trapped, moist air can cause major problems under the tile. Lack of air circulation keeps the battens and felt from drying. The felt will then break down quickly and battens will dry rot.



Ponding Water

Trapped water can cause major damage by allowing water to penetrate under the roof system.

Water Overflow

Dirt and debris collects in the valley. It creates a dam behind the tiles causing water to overflow onto the underlayment.



NEW CONSTRUCTION & REPAIRS

Battens Plus plastic roof battens are used on new construction projects or in use on tile roof repairs. BattenUp™ roof battens are the best option for increasing the life of the roof by providing drainage, ventilation and decreased mold and mildew concerns.

Using Typical Wood Battens



Trapped water can cause major structural damage. If the battens allow water to pond, moisture will penetrate through leaks and nail holes. Water can get under the roof system.

Depending on the severity of the leak, roof sheathing and underlayment will rot, followed by damage to the interior of the structure. Eventually, mold may appear and continue to grow.

Moisture intrusion is one of the leading causes of structural damage. Dry rot, mold and mildew problems are caused when the building envelope is not properly drained or ventilated.

Tile Repairs

Before



Problems at the Gables

Water can get under the rake tiles. It then gets caught on the battens and travels inward.

Repaired with
BattenUp™
roof battens

